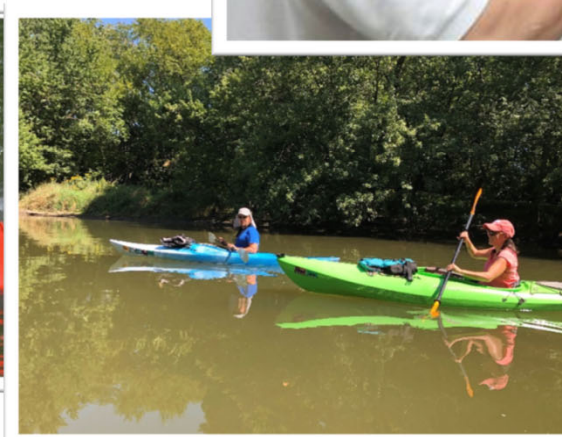
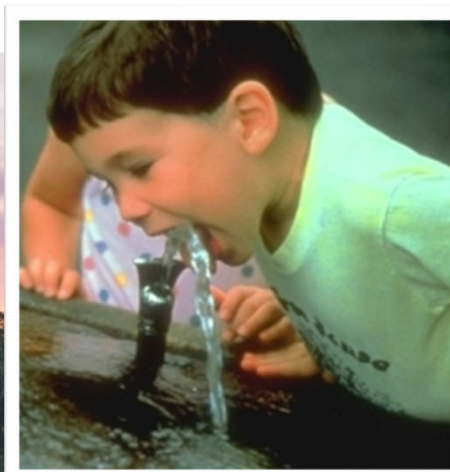
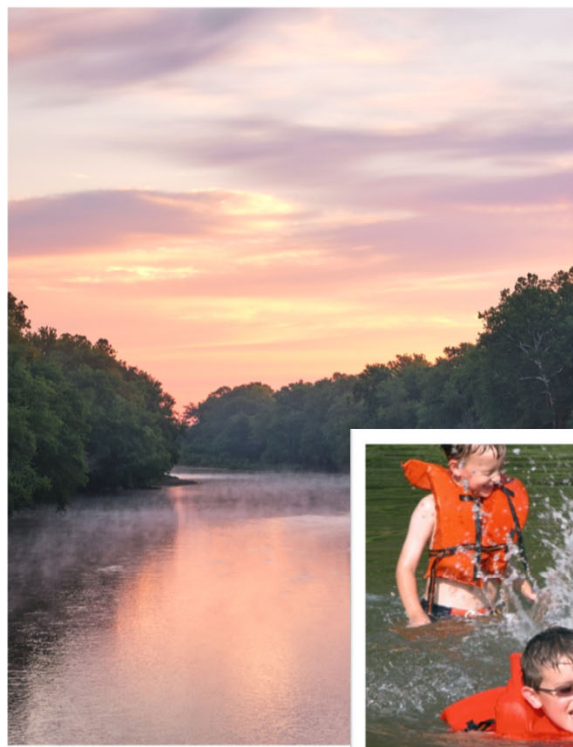
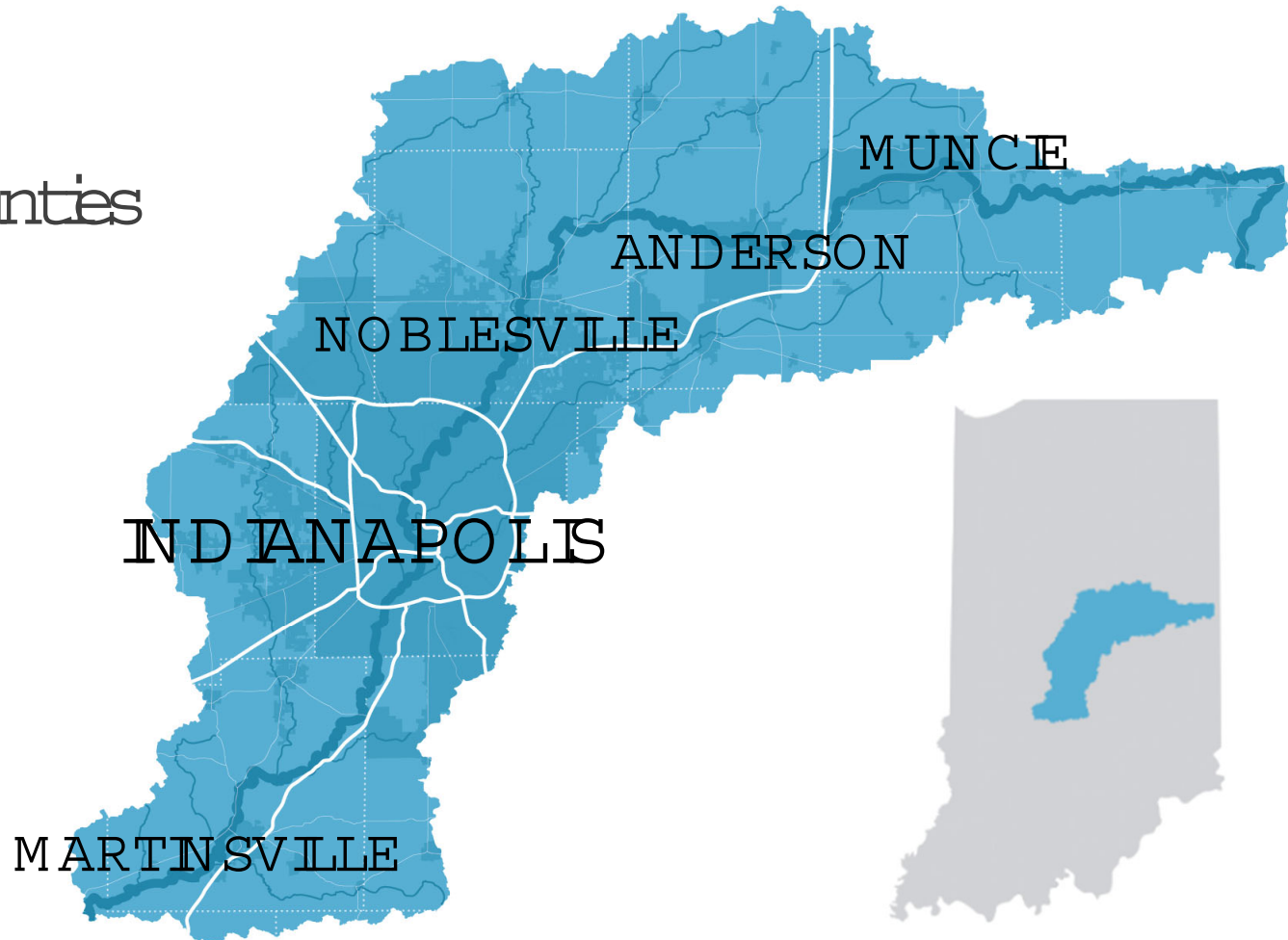


# Our Collective Use – Requires A Watershed Approach

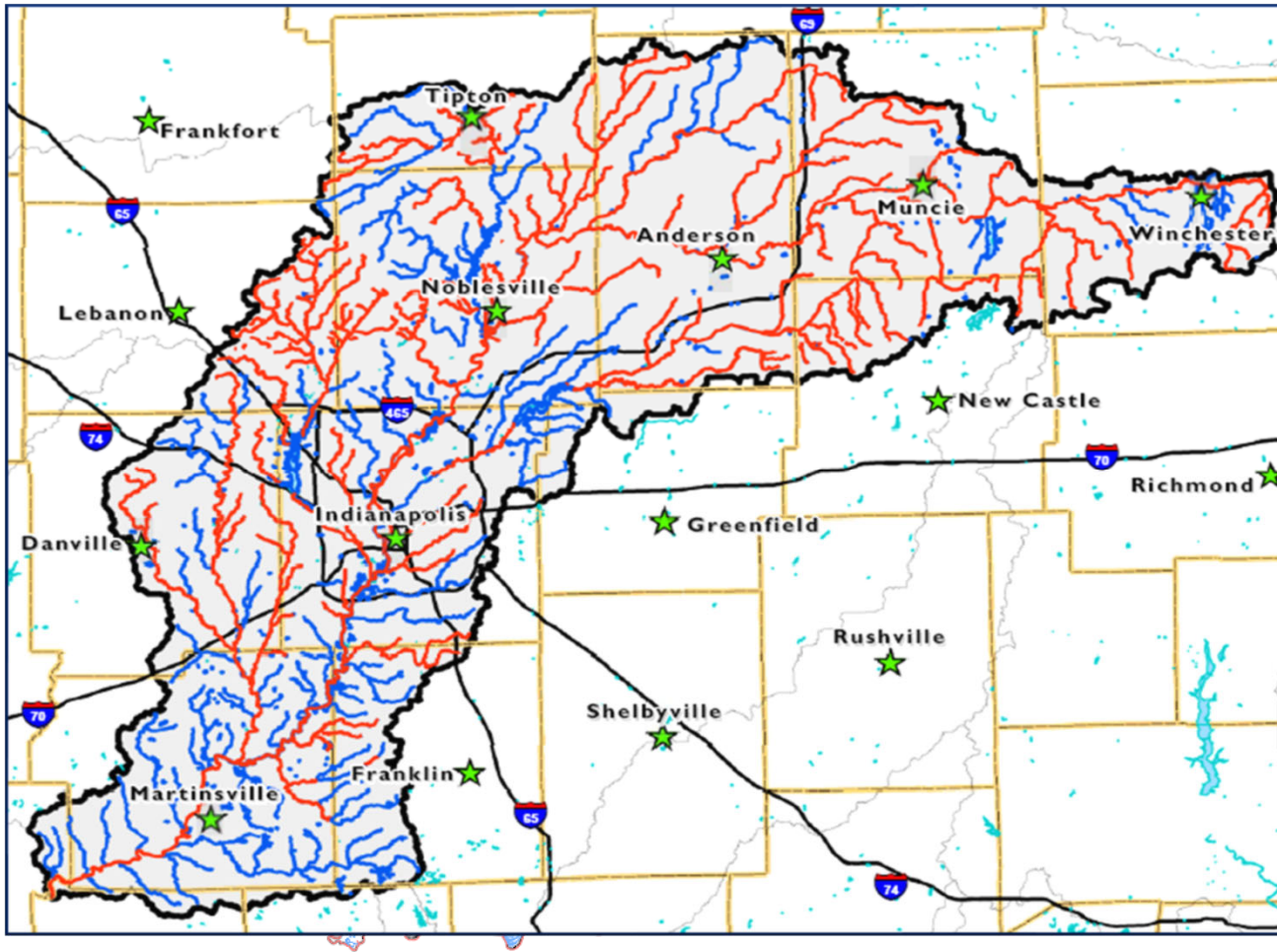


# White River Watershed

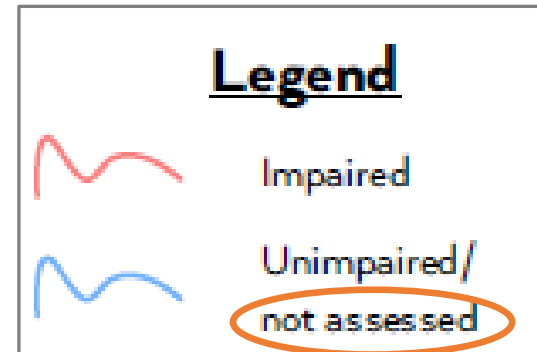
- 1.7 million acres
- A portion of 16 counties
- 4 major reservoirs
- 15 major tributaries
- Home to 2M people
- Primary economic engines



# Water Quality Challenges



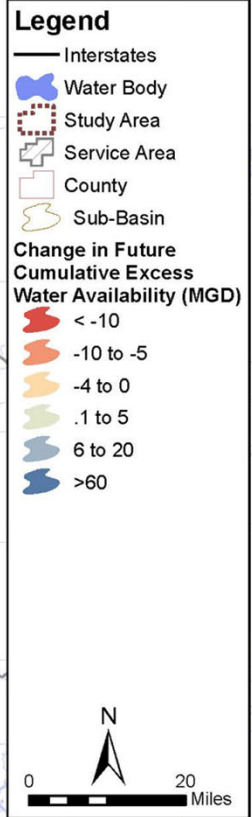
- 47.1% of our state's waters are impaired
- 70.25% of the Upper White's waters are impaired



# Quantity Challenges

Current Availability

Water Availability 2070



# We Need to Look Holistically at the Health of the Watershed

---

Evaluating community, land, and water conditions



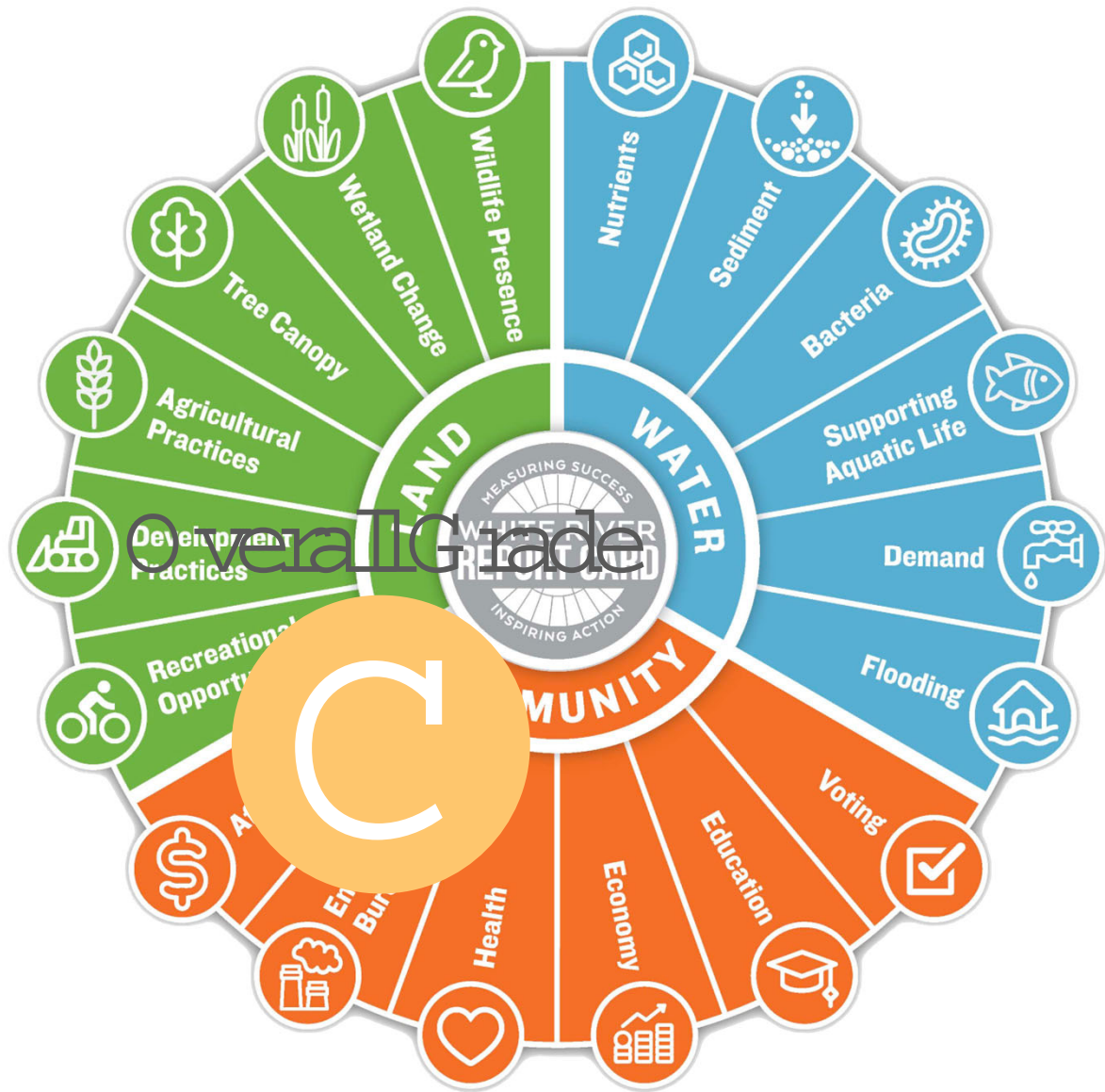
# White River Report Card

...is a stakeholder-developed assessment and communication tool to:

- **Measure** community progress
- **Align** partners and activities
- **Inspire** change







Overall Grade

C



# Key Watershed Findings

## Highest Scoring Indicators



Education :B



Aquatic Life :B -



Wildlife Diversity :B -

## Lowest Scoring Indicators



Bacteria :D



Environmental Burden :D



Wetland Change :F

# Data Challenges

- Only as good as the data
- Revealed data gaps
  - Flooding & Demand
- Raise awareness of data needs

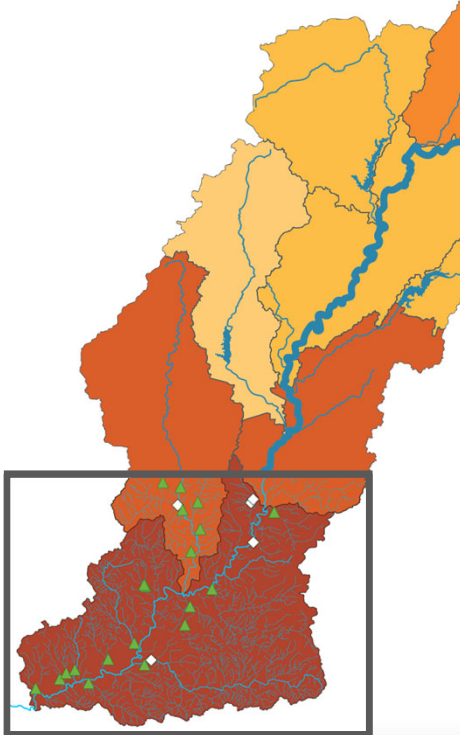
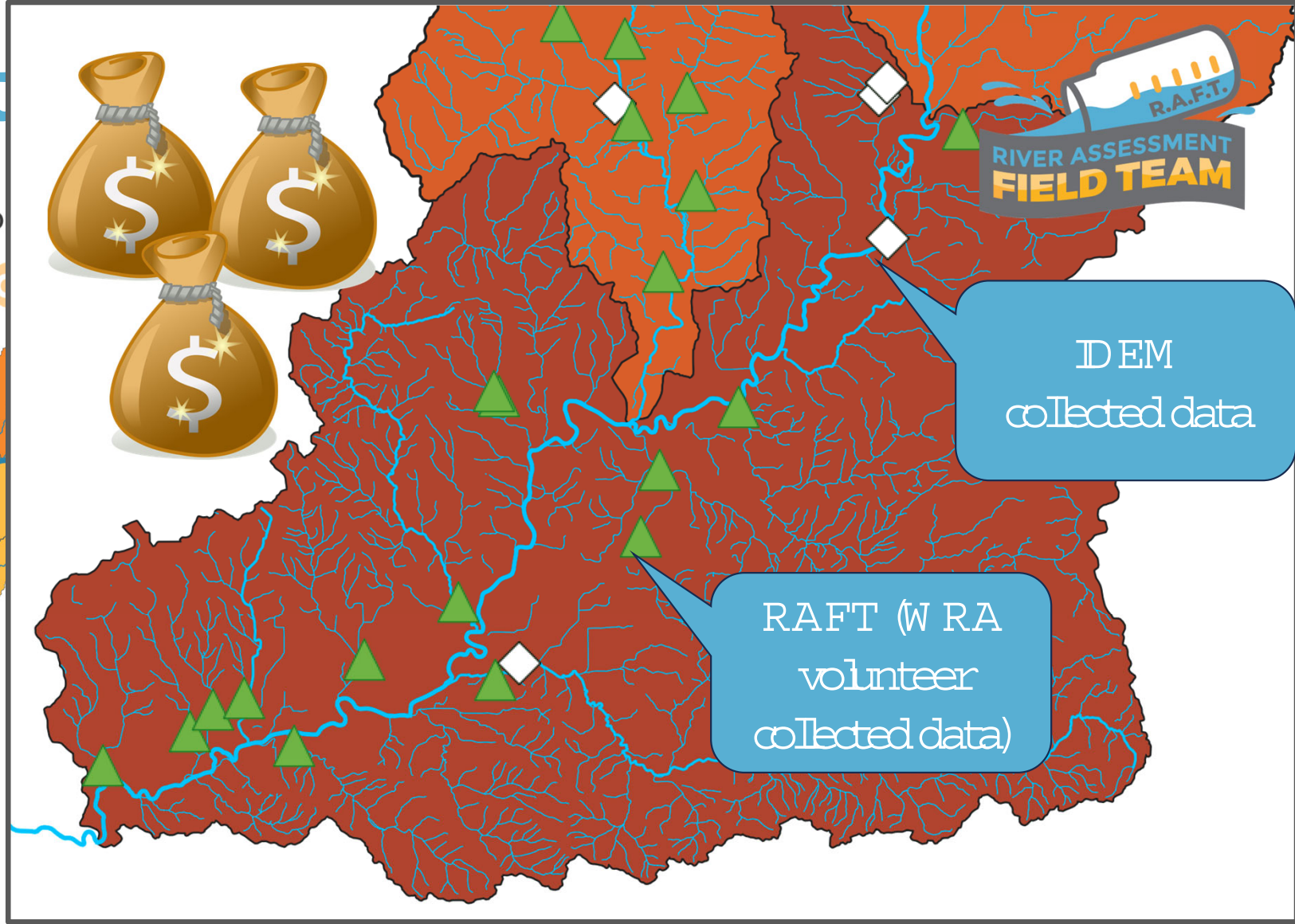




# Bact

VERY GOOD    GOOD    MO

A+   A   A-   B+   B   B-   C



# We Need to Better Understand and Locate Water Quality Issues

---

Strategic water sampling



# Data Challenges

- Only as good as the data
- Revealed data gaps
  - Flooding & Demand
- Raise awareness of data needs



# Our Collective Use – Requires A Watershed Approach

